



Universal Models

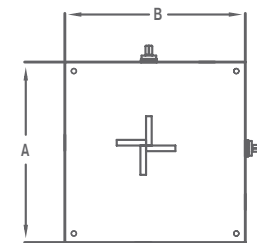
Includes 2 axes of adjustment: moves up & down, and in & out. Any square or rectangle within the capacity of the Turks Head can be set up by merely adjusting the position of the rolls; easiest for set up of standard width and thickness.

Plain Models

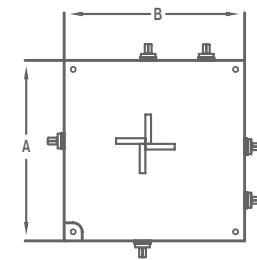
Includes 4 axes of adjustment so each roll moves independently. Because rolls are set up directly in line with each other, plain models are best for producing special shapes.

Combination Models

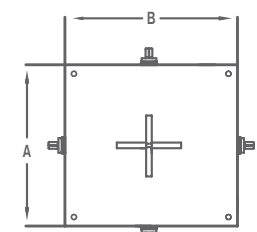
Includes 6 axes of adjustment. Can be used as either a U-type or P-type Turks Head. Provides the most flexibility in setting up the rolls.



Universal Type



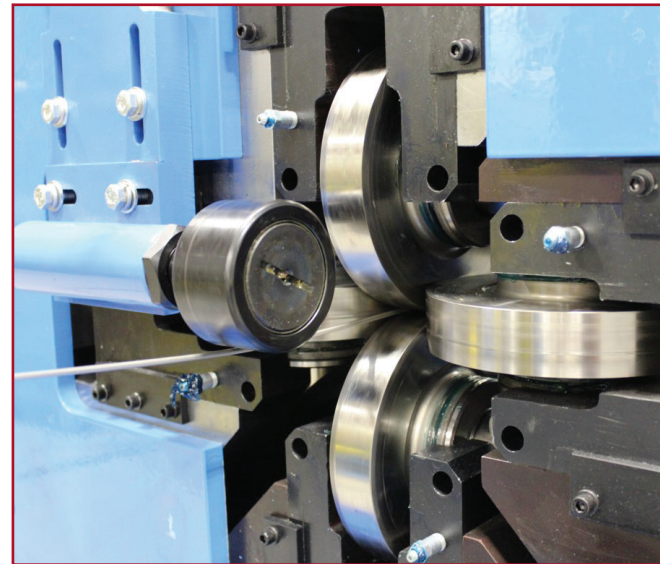
Combination "TH" Type



Plain Type

Models	A (mm)	B (mm)	Max Square (mm)	Max Rectangle	Max Speed in m/min	Weight in kg	Roll Dia (mm)
2UHP	295	270	2	1.0x2.0	120	14	45
3UHP	450	440	3.6	1.8x3.6	180	70	70
3UHS	420	390	2	1.0x2.0	200	70	65
4UHP	660	610	6.4	3.2x6.4	180	240	108
4UHS	750	660	3.8	1.9x3.8	460	240	106
5UHP	1015	935	11	5.5x11.0	300	960	165
5UHS	1120	1010	5.6	2.8x5.6	460	960	178
6U	1270	1170	16	8.0x16.0	60	3500	228
3THHP	480	480	3.6	1.8x3.6	180	70	70
3THHS	395	395	2	1.0x2.0	200	70	65
4THHP	675	675	6.4	3.2x6.4	180	280	108
4THHS	615	615	3.8	1.9x3.8	460	280	106
5THHP	1200	1200	11	5.5x11.0	300	1400	165
5THHS	1130	1130	5.6	2.8x5.6	460	1400	178
6TH	1250	1250	16	8.0x16.0	60	3800	254
			Max Roll Opening				
2PHP	250	250	8.0 x 19.0		120	12	45
3PHP	435	455	16.0 x 28.5		180	70	70
4PHP	670	670	19.0 x 44.5		180	240	108
4PHS	670	670	19.0 x 44.5		460	200	102
5PHP	955	955	35.0 x 76.0		300	800	165

All dimensions subject to factory confirmation.



Turks Heads

For the direct formation of round material to squares, rectangles and special shapes.

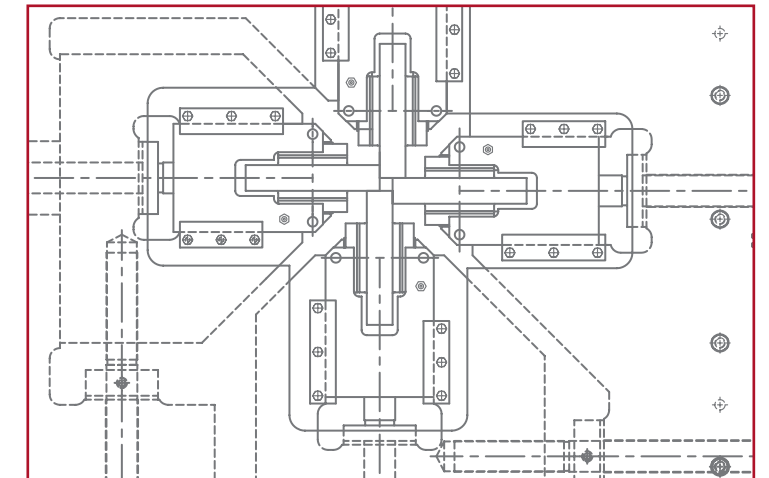
Engineered & Built in the USA

Since 1900 FENN has been in the business of designing and building robust, reliable metal forming machinery that produces unmatched results.

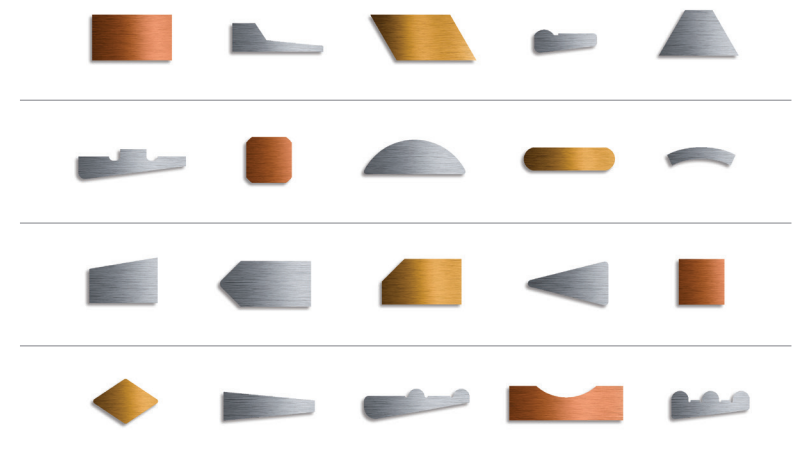
FENN Turks Heads are trusted by manufacturers across the globe for their precision and durability. With over 100 years in the machinery business, we recognize that no one solution can be designed to fit the needs of an ever changing global economy. FENN is pleased to offer a variety of Turks Head solutions for every requirement, including Pull-Through, Power-Driven and Turks Head Mill options.

All FENN machinery is proudly designed and built in our Connecticut, USA headquarters by our experienced staff. Contact us today to learn which style Turks Head is best suited for your application.

Power-Driven, Pull-Through, and Mill types available from the most trusted name in the industry.



Examples of profiles that are possible with FENN Turks Head machines



WIRE • ROD • BAR • STRIP • FERROUS • NON-FERROUS



Achieve precision wire shaping with FENN Turks Heads.

The **Turks Head** is a metal forming machine that can be compared to an adjustable draw die, but is actually infinitely adjustable in its limiting dimensions. The Turks Head operates on the Rolling Mill principle and imparts the same qualities to the metal, including superior finish, accurate size & shape, and improved grain structure. The Turks Head differs from a rolling mill in the number and arrangement of rolls. The Turks Head utilizes two pairs of rolls, one pair is arranged horizontally, while the other is arranged vertically. The material is formed and shaped through the Turks Head by either a pulling device such as a capstan, or by driven rolls in power-driven models.

Pull-Through Turks Heads

A **FENN Pull-Through Turks Head** requires an external pulling device, such as a capstan. *Advantages include:*

- Tension applied to the material by the pulling device minimizes camber
- Capable of running speeds up to 1,500 FPM
- Easy roll adjustment
- Regrindable rolls promote longer usable life and lower maintenance costs



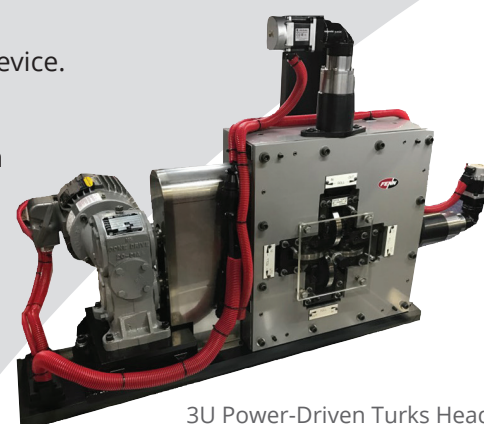
A typical Pull-Through Turks Head with capstan

Power-Driven Turks Heads

A **FENN Power-Driven Turks Head** eliminates the need for a pull-through device.

Advantages include:

- Less floor space is occupied without a pulling device, such as a capstan
- Top and bottom configurations allow for direct roll drive- direct drive is better for constant tension on delicate, low tensile product
- Elimination of a capstan reduces material waste, saving precious metal and scrap
- Easy change roll technology utilizes gear mesh system- allows for quick removal of the roll without disconnecting joints
- Regrindable rolls promote longer usable life and lower maintenance costs



3U Power-Driven Turks Head

Turks Head Mills

Turks Head Mills are used to create a profile for large wire, rod, bar or strip. *Advantages include:*

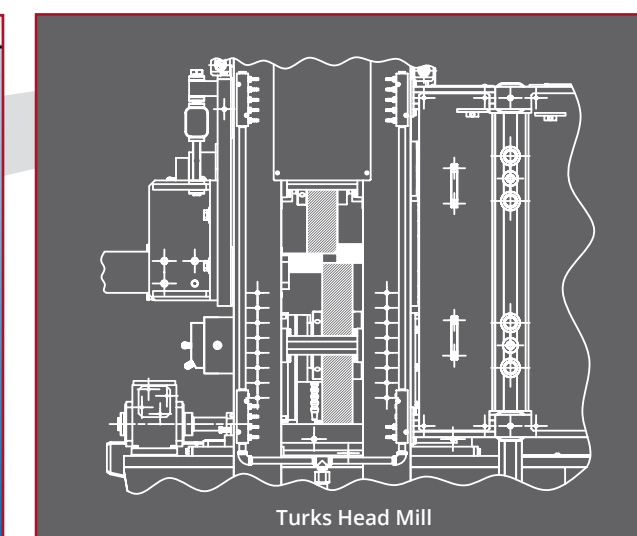
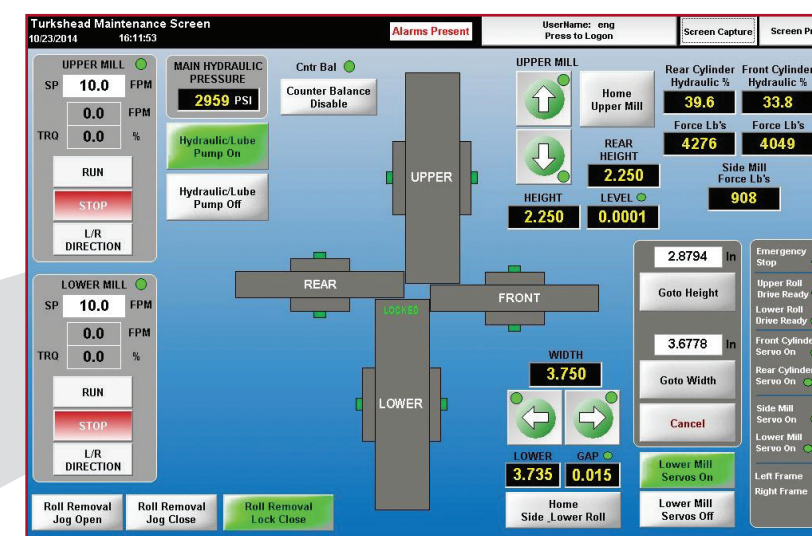
- Standard models include top and bottom roll direct drive
- Customized software available to meet your specific production requirements
- Gauging and closed loop feedback systems can be incorporated
- Can be made as stand alone units or part of a much bigger line
- Mill solutions available for a variety of materials

Typical Materials

- Steel
- Platinum
- Exotic Metals
- Copper
- Precious Metals
- Superconducting

Industries Served

- Medical
- Dental
- Wellscreen
- Aerospace
- Wire
- Military



Turks Head Mill

Available Turks Head Options

- **Manual Fine Adjustment Gearbox** — Connected to the adjusting screws, it enables high accuracy and precision adjustments
- **Motorized Adjustment** — Servo motor and gearbox are connected to an adjusting screw. Encoders built into the motors relay the position for precise control of width and thickness
- **External Coolant System** — Can be incorporated for temperature control in complete lines
- **Asymmetric Rolling** — Available on Power-Driven and Turks Head Mills, allows operator to drive top and bottom rolls at different speeds to prevent bowing of material
- **Guiding Systems** — Ensures accuracy and alignment with rolls of input material